

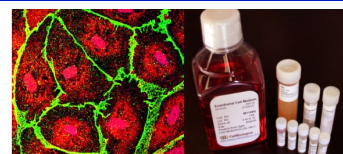


# NewsBEAT

[Membership](#) | [Events](#) | [Awards](#) | [Resources](#)



**CellBiologics**  
A CELL ABOVE THE REST  
**Endothelial Cells Human & Mouse**  
www.cellbiologics.com 1.312.226.8198 service@cellbiologics.com



## IVBM - Abstracts Due August 1

**Abstracts Due: August 1**

**22<sup>nd</sup> International Vascular Biology Meeting**  
October 13-17, 2022  
San Francisco Bay Area  
<https://ivbm2022.org>

- Great opportunities for early stage investigators
- Over 100 abstracts will be selected for short talks within the concurrent sessions
- Three poster sessions
- Ability to indicate first and second choice topics

The program will include over 100 short talks from selected abstracts, including the sessions sponsored by participating societies. Submit your abstract and indicate the theme and topics best aligned with your research. We also expect to have 500 posters over three days - submit your abstract for inclusion in our program!

**August 1 Deadline:**  
abstract submission  
travel award application  
Springer Junior Investigator application  
**Submit Your Abstract**

### See the Preliminary Program



Instructions for **Travel Awards** are within the abstract submission site. In order to be eligible for a NAVBO travel award to the IVBM, you must be a NAVBO Trainee Member and you must submit an abstract. Follow the link above to learn more about submitting an abstract. More information about travel awards can be found on the [IVBM web site](#) and click here for [additional opportunities for trainees](#).

To register for the meeting, go to <https://www.ivbm2022.org/registration/>

*Please note that the IVBM is an in-person meeting.*

Follow the IVBM on social media!



## Vasculata 2022

**Vasculata 2022 was held at Duke University Medical Center from July 18 to July 21.**

Congratulations to Vasculata Organizers, Patty Lee, M.D., Duke University; Edward Moreira Bahnson, Ph.D., University of North Carolina at Chapel Hill; and Francis Miller, M.D., Wake Forest University School of Medicine.

Thanks to all of the speakers and workshop leaders! The meeting was well received by 125 attendees!

There were a record number of 74 abstracts presented as posters. A

special thanks to Valerie Bekker, of Duke University, for her work on the organization and planning of the meeting!

Go to <https://navbo.org/vasculata> for more images from the meeting



Special thanks to **Miltenyi Biotec** for their support and help in organizing the Light Sheet Microscopy Workshop.



### In this issue...

- IVBM 2022
- Vasculata 2022
- HS Educational Program
- Award Nominations
- Lessons Learned
- Spotlight on Trainees
- Lab of the Month
- Mentor Matching
- Member News
- Spotlight on Trainees
- CSR Early Career Reviewers Needed
- Member Publications
- Industry News
- Summer Programs
- Call for Papers/Proposals
- Calendar of Events
- Job Postings
- Did You Know?

### Meetings/Events



**Webinars** - 1st Thursday  
**InFocus Sessions** - 2nd and 4th Thursdays  
**Journal Clubs** - 3rd Thursdays  
**Special Sessions** on Tuesdays  
([check schedule](#))



### Did you know?

#### We've Improved the Career Center!

Simply log in using your NAVBO login (same one you use to access the Member Portal) and the job board will recognize you as an active member and automatically give you the correct member pricing. If your membership expired, you'll be able to log in, but you will not receive the member pricing. **Renew and save money on your job postings! Post an open position today!**

**30-day postings are free for NAVBO members**  
(a savings of \$200)

#### The Member Portal Makes it Easy for NAVBO Members to:

- Register for an online event or upcoming conferences quickly
- Easily see events for which you have registered



Special thanks to **Nortis** for their support and help in organizing the Applying 3D-Engineered Vasculature-on-Chip Models in Drug Discovery Research.



- Access your data and update your profile
- Renew your membership, check your current status, print invoices or receipts
- Search the Directory for other NAVBO members
- Use Research Categories to find those with like interests
- Connect directly to the Vascular Network and our Career Center

## NAVBO's Going Back to High School

### Engaging High School Students in Vascular Biology – How you can help!

We, in the NAVBO community, can all agree that there is a need to empower and engage the next generations of students with vascular biology basics. This knowledge will enable them to increase their critical thinking, improve their scientific literacy, and promote their perception of cardiovascular health as both necessary and relevant. Yet, this exciting field is minimally touched upon in high school and undergraduate biology textbooks or in online resources. It is a missed opportunity to introduce and stimulate students' interest in vascular biology research where they could potentially identify causes and develop new tools and treatments for vascular disease. The NAVBO Education Committee is trying to fill this gap.

Five years ago, the Education Committee began addressing the need at the high school level. Our initial step was to develop PowerPoint learning modules covering various aspects of basic and clinical vascular biology to provide teachers and students with tools to advance vascular biology learning in the classroom. Our next step is to further develop the material into high quality educational lessons/presentations online tools, and resources. The timing is right; teachers and students have learned the value of online learning. Currently, the committee is looking for suitable extramural funding mechanisms that will enable us to move this project forward. The funding would be used to produce and distribute these learning modules.

This is where we need your input. Please let us know of any resources (funding agencies, foundations, etc.) that could be beneficial in moving our goals forward OR any suggestions as to how we can best disseminate the learning tools, particularly to underserved geographic areas in the United State. If you have an interest in contributing to this project in any capacity, we welcome it. Please contact Sharon DeRosa Smolen ([sharon@navbo.org](mailto:sharon@navbo.org)) with your suggestions or interest in helping.

## 2023 Nominations Due July 29



Earl P. Benditt Award



M. Judah Folkman Award

Nominations for these two awards are due tomorrow, July 29. For information, go to <https://www.navbo.org/nominations/>.

## Lessons Learned



### Erich Kushner, Ph.D.

Hi, my name is Erich Kushner, and I have been an Assistant Professor at the University of Denver for 6 years. With no qualifications, I can say that running a lab has been a tremendous learning curve with both peaks and valleys. Now sitting on the opposite side of the

desk, not providing the data, but being the one to scrutinize it, make difficult decisions, encourage, sometimes having to discourage, and providing personnel feedback, was something I was not prepared for. Although, I believe I have learned a lot over these ensuing years, I know there is a literal universe of tips that would prove to be helpful, many of which having nothing to do with producing rigorous science. Hopefully, new(er) faculty will find the two anecdotes below helpful to subvert the personal and professional flogging I subjected myself to in the early years of starting a lab.

[Continue reading Dr. Kushner's Lessons Learned here.](#)

## Travel Awards for IVBM

[Trainees Apply for a Travel Award](#)



### There's an app for that!

Download the **MemberPlus** app to register for events, find other NAVBO members and access resources such as the **Career Center** and the **NAVBO Academy** on your phone or tablet. **Go to the App Store or Google Play.**



22nd International  
Vascular Biology Meeting  
San Francisco Bay Area  
October 13-17, 2022



## IVBM 2022 Supporters

We gratefully acknowledge the support of the following societies, academic centers and corporations.

**Corporate Support**  
Diamond Level



Gold Level Partner



Several organizations will be offering trainee travel awards to this year's IVBM. You must submit an abstract in order to be eligible (details are included within the submission site). At the time of this announcement the organizations include:

ACS Pharmacology and Translational Science  
American Society for Investigative Pathology  
British Microcirculation Vascular Biology Society  
Japanese Vascular Biology and Medicine Organization  
Korean Society for Vascular Biology and Medicine  
Microcirculatory Society  
North American Vascular Biology Organization

Go to <https://www.ivbm2022.org/trainee-opportunities/> for details. **Deadline to apply is August 1 (same as abstract deadline).**

## Lab of the Month



### Lab of the Month - July 2022

#### The Lab of Dr. Erich Kushner

This month we are highlighting the lab of Dr. Erich Kushner, Assistant Professor at the University of Denver. Find out more about his lab by visiting [his page](#) in our Lab of the Month listing.

## NAVBO Mentor Match



### Take Advantage of the NAVBO Mentor Match Program

NAVBO is providing our community with a mentor-mentee matching program. Mentors must be NAVBO members. If someone is interested in enrolling as a mentee and is not a NAVBO member, contact Danielle ([membership@navbo.org](mailto:membership@navbo.org)).

When you enroll, select the area in which you would like to concentrate on - managing a lab, looking for a postdoc position, diversity and inclusion, developing a research program, life balance, etc. The system will make mentor suggestions to mentees and mentees can reach out to suggested Mentors.

Find out more about the program within the Vascular Network - <https://community.navbo.org/mentoring>

## Member News

### Welcome to our New Members:

Parnian Alavi, University of Alberta  
Parya Behzadi, University of Pittsburgh  
Rira Choi, Yale University  
Elizabeth Crouch, University of California, San Francisco  
Zeenat Diwan, University of Pennsylvania  
Jaime Ibarrola, Tufts Medical Center  
Roy Jung, UMASS Medical School  
Quinn Lee, University of Illinois at Chicago  
Lun Li, University of Pennsylvania  
Iyanuoluwa Ogunmiluyi, Kent State University  
Blessing Ogunpolu, Kent State University  
Jong Park, NIH/NICHD  
Noah Perry, University of Virginia  
Amit Prabhakar, UCSF  
Josephine Tan, University of Pennsylvania  
Nicolas Villa-Roel, Georgia Tech & Emory University  
Velda Wang, Duke University

If you have news to share with your colleagues, send it to [membership@navbo.org](mailto:membership@navbo.org)

## Spotlight on Trainees

### Michelson Philanthropies & Science Prize for Immunology

The Michelson Philanthropies & Science are accepting applications for their annual research prize in Immunology. Application is open to investigators 35 and younger, who apply their expertise to research with the potential to broaden the impact of immunology on related disciplines. The award is intended to

Anses

Strategic Partners

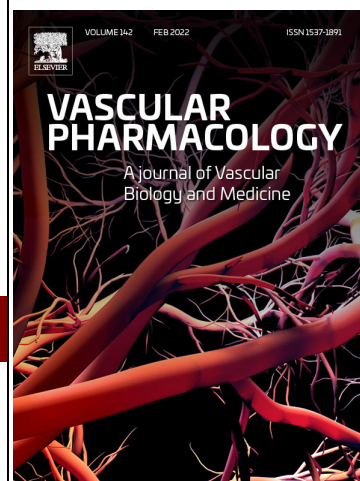


Event Partners

Calico

frontiers Impact Factor 6.050  
in Cardiovascular  
Medicine

JCI The Journal  
of Clinical Investigation



Contributors

ACS  
Pharmacology  
& Translational Science



EMBO



ScienceAdvances

AAAS

Participating  
Societies  
Partners

ASIP  
American Society for Investigative Pathology

EVB  
EUROPEAN  
VASCULAR BIOLOGY  
ORGANISATION



support transformative research in human immunology, with trans-disease applications to accelerate vaccine and immunotherapeutic discovery. It is open to researchers from computer science, artificial intelligence/machine learning, protein engineering, nanotechnology, genomics, parasitology and tropical medicine, neurodegenerative diseases, and gene editing. Deadline to [apply](#) is Oct. 1, 2022.

*Originally published in our July 14 issue*

## CSR's Early Career Reviewers

The Center for Scientific Review (CSR) at the National Institutes of Health invites early career scientists to join our Early Career Reviewer program. Participants gain first-hand NIH grant review experience which can be helpful in preparing their own grants.

In brief, the program is open to those who:

- Have at least 1 year of independent research experience (assistant professors and similar roles; associate professors are not eligible and post-docs are not eligible)
- Have not held an R01 or equivalent
- Have at least one senior-authored publication (first, last, or corresponding) since earning a Ph.D. or M.D. and at least one in the last 2 years
- Have submitted an NIH grant application and received the summary statement

Details and the application can be found here:

<https://public.csr.nih.gov/ForReviewers/BecomeAReviewer/ECR>

Questions are welcome – [CSRearlycareerreviewer@mail.nih.gov](mailto:CSRearlycareerreviewer@mail.nih.gov)

## Recent Member Publications

### Industry News

#### AAMC annual meeting slated for November in Nashville

The American Association of Medical Colleges will hold its 2022 meeting November 11-15 in Nashville. A plenary titled Resurrecting Civil Discourse: A Conversation with Robert George and Cornel West will explore, via debate between these leaders in social, cultural, and political thinking, key issues affecting our global community within and beyond the walls of academic medicine. Other sessions will focus on health effects of racial inequities and climate change. Registration info may be found [here](#).

#### The shortest distance between two points is...good planning

With pandemic-derived concerns about in-person conferences abating, anxiety increasing has shifted to the vagaries of air travel. A [recent CNN report](#) shares tips on increasing chances of getting where you want to go by air in a timely way. Their hints include strategic flight scheduling to accommodate delays or cancellations and packing of belongings to mitigate consequences of checked luggage gone astray. Bear these handy tips in mind as you plan your travel to [IVBM 2022](#) this fall!

#### NASEM workshop on disability associated with Long COVID

The National Academies Press has [issued a report](#) on the proceedings of a workshop on “Long COVID,” the wide range of persisting symptoms experienced by some patients after a SARS-CoV-2 infection. Many knowledge gaps exist regarding Long COVID, including the prevalence of the condition, the impact of the symptoms on survivors' ability to function, and the long-term course of the condition. In view of potentially wide-ranging effects on a person's daily life, federal entities including the Social Security Administration are in need of evidence-based guidance to determine how their programs can best support individuals who suffer disability as a result of Long COVID.

*Originally published in our July 14 issue*

## Summer Programs



## PRIDE CVD-CGE

Cardiovascular Disease Comorbidities, Genetics and Epidemiology July 11-27, 2022 at the University of Washington in St. Louis

The NHLBI-funded “Programs to Increase Diversity Among Individuals Engaged in Health-Related Research” support junior faculty underrepresented in biomedical research.



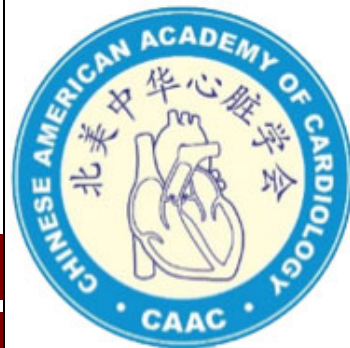
The Japanese Vascular Biology and Medicine Organization



Sponsors



AUSTRALIAN VASCULAR BIOLOGY SOCIETY



Guests



BMVBS  
British Microcirculation & Vascular Biology Society



Academic  
Suma Cum Laude



BRIGHAM AND WOMEN'S HOSPITAL  
CARDIOVASCULAR MEDICINE



Space is limited for the mentored program starting summer 2022.  
**Apply early!**

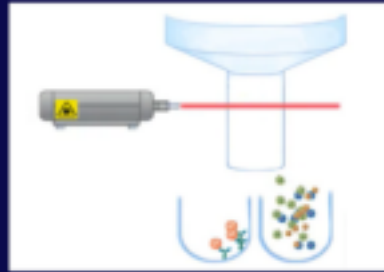
[Learn more . . .](#)

## More PRIDE Programs:

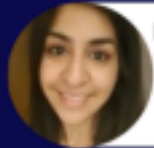
- [Cardiovascular Health-Related Research](#) (SUNY Downstate Health Sciences University)
- [Future Faculty of Cardiovascular Sciences](#) (UC San Diego)
- [Research in Implementation Science for Equity](#) (UC San Francisco)

## Call for Papers/Proposals

### Emerging Methods in Profiling Endothelial Cells at Single-Cell Resolution



**Zhen B. Chen**  
City of Hope,  
Department of Diabetes  
Complications and  
Metabolism



**Naseeb Kaur Malhi**  
City of Hope,  
Department of Diabetes  
Complications and  
Metabolism

Are you using leading-edge techniques to profile endothelial cells at single-cell resolution? Consider submitting your work to a new JoVE collection guest-edited by NAVBO members, **Dr Zhen Bouman Chen** (2020 Springer Junior Investigator Award winner) and Dr. **Naseeb Malhi** at City of Hope! For more information or to submit an abstract, please email [zhenchen@coh.org](mailto:zhenchen@coh.org) or [follow this link](#).



### Lymphatic System: Organ Specific Functions in Health and Disease

Topic Editors: **Tsutomu Kume**, **Young-Kwon Hong**, **Zoltán Jakus** and **Kaska Koltowska**

[Read more](#)

There is a new Research Topic titled **Brain Arteriovenous Malformations: Cerebrovasculature Behaving Badly**, in the journal *Frontiers in Human Neuroscience*, organized by **Richard Daneman**, **Marcus Stoodley** and **Lori Shoemaker**.

Our goal is to highlight advances in AVM research from the laboratory to the clinic, and to suggest where gaps remain. We also intend to place AVMs in the context of neurovascular development and the complex interactions of cell types within the vasculature and the brain.

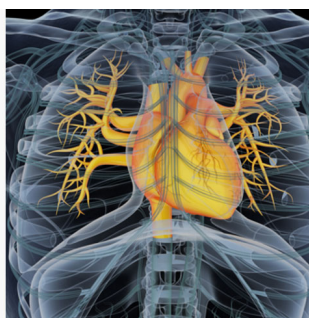
We invite high-level original research articles, novel models or imaging methods, focused reviews, hypotheses/theories, and insight/opinion articles. Please consider contributing an article to this topic – it will be a valuable resource for the field. All the details can be found at: <https://www.frontiersin.org/research-topics/30037/brain-arteriovenous-malformations-cerebrovasculature-behaving-badly>

frontiers | Frontiers in Physiology

### Novel Adipose Regulation of Vascular Physiology and Cardiovascular Disease

Carolina Restini, Michigan State University, United States  
Cameron G McCarthy, University of South Carolina, United States  
Jessica Faulkner, Augusta University, United States

Topic Editors



Research Topic  
now open for  
submissions

**Novel Adipose Regulation of Vascular Physiology and Cardiovascular Disease** hosted by Drs. Carolina Restini (Michigan State University), **Cameron G. McCarthy** (University of South Carolina School of Medicine) and Jessica L. Faulkner (Medical College of Georgia at Augusta University).

It is well established that adipose tissue has profound influence on organ function via paracrine and endocrine signaling. Specifically,

Magna Cum Laude



Cum Laude



**THE WALL CENTER**  
PULMONARY VASCULAR DISEASE  
@STANFORD

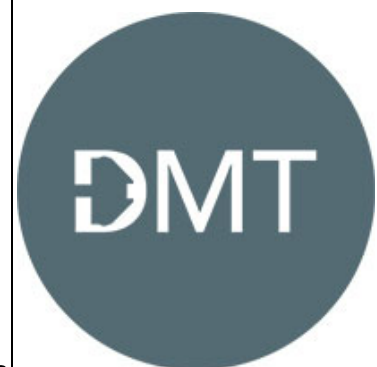
Contributor



Exhibitors



Quantifying Cell Behavior



FUJIFILM  
Value from Innovation

VISUAL SONICS



Miltenyi Biotec



NAVBO  
Corporate Partners



Quantifying Cell Behavior





adipose tissue is able to express and secrete various bioactive molecules (e.g. adipokines). However, depending on the type of fat (brown or white), the organ, and the embryological origin, adipose tissues may diverge in the production/secretion of specific metabolites and how they subsequently affect organ function. Therefore, how adipose tissue contributes to homeostatic vascular physiology and the pathogenesis of cardiovascular disease is far-reaching, as are possible therapeutic targets. In this issue, we aim to bring together a collection of state-of-the-art articles that illustrates this potential and contributes significantly to combating the prevalence and incidence of cardiovascular disease by targeting adipose tissue depots.

Submit your paper here: <https://www.frontiersin.org/research-topics/27566/novel-adipose-regulation-of-vascular-physiology-and-cardiovascular-disease>



**The Lipedema Foundation (LF)** announces a request for research proposals, soliciting high quality research from scientists and clinicians around the world. The initial LOI calls for ideas that have the potential to define and diagnose Lipedema. We welcome applicants of all backgrounds and career stages to collaborate with the Lipedema Foundation in our mission to share knowledge, support research, and achieve a future without Lipedema.

For more details please visit <https://www.lipedema.org/rfp2022>

**The deadline for LOI receipt is July 20, 2022.**

frontiers in Cardiovascular Medicine Impact factor: 6.05  
frontiers in Pediatrics Impact factor: 3.418

**Molecular Mechanisms Underlying Single Ventricle Defect**

Yifei Miao, Cincinnati Children's Hospital Medical Center, United States  
Shuyi Nie, Georgia Institute of Technology, United States  
Mingtao Zhao, Nationwide Children's Hospital, United States

Topic Editors

Molecular Mechanisms Underlying Single Ventricle Defect hosted by Drs. Yifei Miao (Cincinnati Children's Hospital Medical Center), Shuyi Nie (Georgia Institute of Technology), and Mingtao Zhao (Nationwide Children's Hospital).

Single ventricle defects (SVD) are among the most complex congenital heart problems and manifest as the underdevelopment of one heart chamber and associated valvular structures. We have organized a special issue on **Frontier in Pediatrics and Cardiovascular Medicine** to collect the current progress into understanding the molecular contributions to SVD.

For more information or to submit an abstract, please email us or use this link: <https://www.frontiersin.org/research-topics/37616/molecular-mechanisms-underlying-single-ventricle-defect>

## Calendar of Events

August 4, 2022	Webinar Featuring Dr. Patty Lee
August 11, 2022	InFocus - Cardiovascular Disease Highlights from Vasculata
Sept. 17 - 20, 2022	12th International Kloster Seeon Meeting "Angiogenesis": Molecular Mechanisms and Functional Interactions
Sept. 28 - Oct. 1, 2022	18th Biennial ISACB Meeting
October 13 - 17, 2022	22nd International Vascular Biology Meeting
October 24 - 27, 2022	Critical Issues in Tumor Microenvironment: Angiogenesis, Metastasis and Immunology
Oct. 30 - Nov. 4, 2022	The 2022 Gordon Research Conference on Lymphatics
Jan. 31 - Feb. 3, 2023	VAC 2023

[Visit the NAVBO Calendar of Events for more meetings](#)

**TRON**

**JUNIOR GROUP LEADER (M/F/D)**  
to establish a Research Group on "Modulating inflammation in cardiovascular disease".

## Job Postings

Job Title	Company	Location
<a href="#">Post-Doctoral Fellowship</a>	National Institutes of Health/NICHD	Bethesda, MD



FUJIFILM  
Value from Innovation

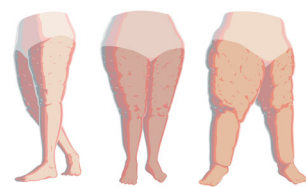
VISUALSONICS



Miltenyi Biotec



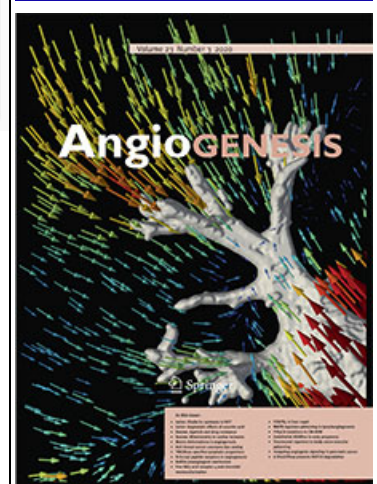
## Corporate Members



LIP E D E M A  
F O U N D A T I O N



## Affiliated Journals



## Cardiovascular Pathology



<a href="#">Life Science Research Professional 1 - Laboratory Manager</a>	Stanford University	Stanford, CA
<a href="#">PhD student positions on microprotein research at the Institute for Vascular Signalling</a>	Goethe University	Frankfurt am Main, Germany
<a href="#">Research Assistant Professor and Postdoc fellow</a>	Northwestern University Feinberg School of Medicine-Lurie Children's Hospital of Chicago	Chicago, IL

**North American Vascular Biology Organization**  
 18501 Kingshill Road | Germantown, MD 20874  
 (301) 760-7745



[Mailing Preferences / Unsubscribe](#)

**North American Vascular Biology Organization**  
 18501 Kingshill Road | Germantown, MD 20874  
 (301) 760-7745  
[Unsubscribe](#)

