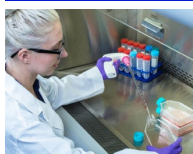


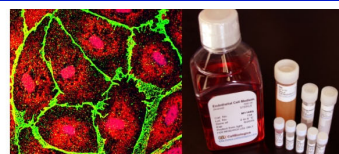


NewsBEAT

[Membership](#) | [Events](#) | [Awards](#) | [Resources](#)



CellBiologics
A CELL ABOVE THE REST
Endothelial Cells Human & Mouse
www.cellbiologics.com 1.312.226.8198 service@cellbiologics.com



Meet Our New President-Elect



Kristy Red Horse, Ph.D.

Dr. Red Horse received her MS from San Francisco State University and PhD from the University of California, San Francisco, with Dr. Susan Fisher studying immune cell trafficking at the human maternal-fetal interface and how the vasculature of the placenta incorporates within the uterine arterial network. Her primary Postdoc was with Dr. Mark Krasnow at Stanford University where she identified the progenitors of coronary arteries in mouse hearts.

Photo by Harrison Truong/Stanford University

In her own lab at Stanford, Dr. Red Horse and her team explore many different aspects of how coronary arteries develop and

respond to injury with a long-term goal of devising methods for enhancing cardiac regeneration and repair.

Dr. Red Horse has enjoyed being a member of the NAVBO community since 2007 and served as a council member 2018-2021. She received the Judah Folkman Award in 2020 and is a frequent co-Organizer/participant in NAVBO's yearly Vascular Biology meetings.

Meet our newest Councilors, **Anjelica Gonzalez** (Yale University) and **Tsutomu Kume** (Northwestern University), in upcoming newsletters.

Limited Space Still Available



Vasculata 2022

July 18-21, 2022

Duke University Medical Center

We're excited to have Vasculata hosted at Duke University - organized by Patty Lee, M.D., Duke University; Edward Moreira Bahnson, University of North Carolina at Chapel Hill; and Francis Miller, Wake Forest University School of Medicine. The program features a keynote lecture by Dr.

Vicki Bautch of the University of North Carolina at Chapel Hill, hands-on workshops, affordable housing, networking, poster sessions and more! Only 30 spots left - Join us this summer! **Go to <https://navbo.org/vasculata>**



Miltenyi Biotec

Special thanks to **Miltenyi Biotec** for their support and help in organizing the Light Sheet Microscopy Workshop.

DEI Article by NAVBO Committee

Barriers to Equity	Who can provide solutions?	How to improve issues?
<ul style="list-style-type: none"> • Race and ethnicity • Cultural discrimination • Language barrier • Gender discrimination • Sexual orientation • Religious discrimination • Age discrimination • Socioeconomic disparities • Intellectual discrimination • Physical discrimination • Pay inequity • Country of origin • Inequity • Ignorance 	<ul style="list-style-type: none"> • International organizations • Government bodies • Law enforcement • Academic institutions • Scientific societies • Political leaders • Community leaders • Families • Individuals • Good samaritan 	<ul style="list-style-type: none"> • Reforms • Legislation • Advocacy • Movements • Education • Community programs • Targeted interventions • Socioeconomic solutions • Training programs

In this issue...

- [President-Elect](#)
- [Vasculata 2022](#)
- [Diversity, Equity, and Inclusion Committee](#)
- [IVBM 2022](#)
- [Mentor Matching](#)
- [Spotlight on Trainees](#)
- [Lab of the Month](#)
- [Member News](#)
- [Spotlight on Trainees](#)
- [CSR Early Career Reviewers Needed](#)
- [Member Publications](#)
- [Industry News](#)
- [Summer Programs](#)
- [Call for Papers/Proposals](#)
- [Calendar of Events](#)
- [Job Postings](#)
- [Did You Know?](#)

Meetings/Events



Webinars - 1st Thursday
InFocus Sessions - 2nd and 4th Thursdays
Journal Clubs - 3rd Thursdays
Special Sessions on Tuesdays
(check schedule)



Did you know?

We've Improved the Career Center!

Simply log in using your NAVBO login (same one you use to access the Member Portal) and the job board will recognize you as an active member and automatically give you the correct member pricing. If your membership expired, you'll be able to log in, but you will not receive the member pricing. **Renew and save money on your job postings! Post an open position today!**

30-day postings are free for NAVBO members
(a savings of \$200)

The Member Portal Makes it Easy for NAVBO Members to:

- Register for an online event or upcoming conferences quickly
- Easily see events for which you have registered

The NAVBO Diversity, Equity and Inclusion Committee worked diligently to produce the article, “*Embracing Diversity, Equity and Inclusion in the Scientific Community – Viewpoints of the Diversity, Equity and Inclusion Committee of the North American Vascular Biology Organization*,” to offer a perspective on DEI in the scientific community. The article not only discusses racial injustice, but also covers various challenges faced by other groups, including women, LGBTQ+, and internationally-trained scientists. Led by Drs. Masanori Aikawa and Mahdi Garelnabi (former and current chairs of the DEI Committee), and members of the NAVBO DEI Committee: Mitzy Cowdin, Yung Fang, Bandana Shrestha, Masuko Ushio-Fukai, Elena Aikawa, Grietje Molema, and Hiromi Yanagisawa collaborated to produce [the article](#).

The article is, of course, open access published by Frontiers in Cardiovascular Medicine and we encourage you to read it, share it and post it on your social media channels. [Click here to link to a post that you can retweet.](#)

Thank you for helping us to promote diversity, equity and inclusion within our scientific community and the academic community.



IVBM - Plan to Attend!



Current NAVBO regular and postdoc members receive a discount - pay only \$495 through August 31. NAVBO students pay \$365 through August 31. *Members of participating societies also receive discounts. See the list on the registration page. To register for the meeting, go to*

<https://www.ivbm2022.org/registration/>

Please note that the IVBM is an in-person meeting.

See the Preliminary Program

Our program now includes several more sessions programmed by our collaborating societies. See the program at <https://ivbm2022.org/program>

The program will also include over 100 short talks based on selected abstracts, including the sessions sponsored by the participating societies. Submit your abstract and indicate the theme and topics best aligned with your research. We also expect to have 500 posters over three days - submit your abstract for inclusion in our program!

The abstract deadline is August 1, 2022

Submit Your Abstract

NAVBO Mentor Match



Take Advantage of the NAVBO Mentor Match Program

NAVBO is providing our community with a mentor-mentee matching program. Mentors must be NAVBO members. If someone is interested in enrolling as a mentee and is not a NAVBO member, contact Danielle (membership@navbo.org).

When you enroll, select the area in which you would like to concentrate on - managing a lab, looking for a postdoc position, diversity and inclusion, developing a research program, life

- Access your data and update your profile
- Renew your membership, check your current status, print invoices or receipts
- Search the Directory for other NAVBO members
- Use Research Categories to find those with like interests
- Connect directly to the Vascular Network and our Career Center



There's an app for that!

Download the **MemberPlus** app to register for events, find other NAVBO members and access resources such as the **Career Center** and the **NAVBO Academy** on your phone or tablet. **Go to the App Store or Google Play.**



22nd International Vascular Biology Meeting
San Francisco Bay Area
October 13-17, 2022



IVBM 2022 Supporters

We gratefully acknowledge the support of the following societies, academic centers and corporations.

Corporate Support

Diamond Level



Gold Level Partner

balance, etc. The system will make mentor suggestions to mentees and mentees can reach out to suggested Mentors.

Find out more about the program within the Vascular Network - <https://community.navbo.org/mentoring>

Travel Awards for IVBM

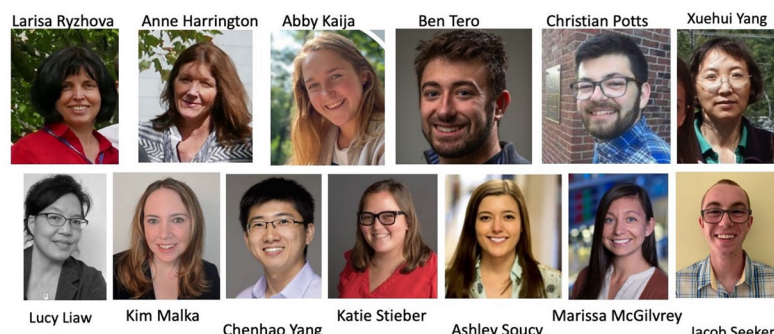
Trainees Apply for a Travel Award

Several organizations will be offering trainee travel awards to this year's IVBM. You must submit an abstract in order to be eligible (details are included within the submission site). At the time of this announcement the organizations include:

ACS Pharmacology and Translational Science
British Microcirculation Vascular Biology Society
Japanese Vascular Biology and Medicine Organization
Korean Society for Vascular Biology and Medicine
North American Vascular Biology Organization

Go to <https://www.ivbm2022.org/trainee-opportunities/> for details. Deadline to apply is August 1 (same as abstract deadline).

Lab of the Month



Lab of the Month - June 2022

The Lab of Dr. Lucy Liaw

This month we are highlighting the lab of Dr. Lucy Liaw, Professor at MaineHealth Institute for Research. Find out more about her lab by visiting [her page](#) in our Lab of the Month listing.

Member News

Welcome to our New Members:

Saptarshi Biswas, Columbia University Irving Medical Center
Vadym Buncha, Medical College of Georgia, Augusta University
Anna Cantalupo, Icahn School of Medicine at Mount Sinai
Melody Chemaly, Karolinska Institute
Joanderson da Silva, Instituto Butantan
Raiana dos Anjos Moraes, University of South Carolina
Kaustabh Ghosh, UCLA and Doheny Eye Institute
Pieter Martino, Yale University
Thomas Mitchell, Queen Mary University of London
Madhur Sachan, Brigham and Women's Hospital
Mary Sorci-Thomas, Medical College of Wisconsin

If you have news to share with your colleagues, send it to membership@navbo.org

Spotlight on Trainees

Applications for 2022 Science & SciLifeLab Prize open

Science & SciLifeLab announce [opening of applications](#) for their annual Prize for Young Scientists, awarded to promising scientists who have received their Ph.D. between January 1, 2020 and December 31, 2021. The prize is presented in four categories: Cell and Molecular Biology, Ecology and Environment, Molecular Medicine, and Genomics, Proteomics and Systems Biology. Applicants will submit a 1000-word essay (due July 15, 2022) to be assessed on the quality of research and the applicants' ability to articulate how their work would contribute to the scientific field. Prize winners will have their essays published by Science, receive a cash award, and be invited to Sweden to present your research and meet with leading scientists in your field.

Originally published in our June 2 issue

CSR's Early Career Reviewers

The Center for Scientific Review (CSR) at the National Institutes of Health invites early career scientists to join our Early Career Reviewer program. Participants gain first-hand NIH grant review experience which can be helpful in preparing their own grants.

In brief, the program is open to those who:

- Have at least 1 year of independent research experience (assistant professors and similar roles; associate professors are not eligible and post-docs are not eligible)
- Have not held an R01 or equivalent
- Have at least one senior-authored publication (first, last, or corresponding) since earning a Ph.D. or M.D. and at least one in the last 2 years
- Have submitted an NIH grant application and received the summary statement

Details and the application can be found here:

<https://public.csr.nih.gov/ForReviewers/BecomeAReviewer/ECR>

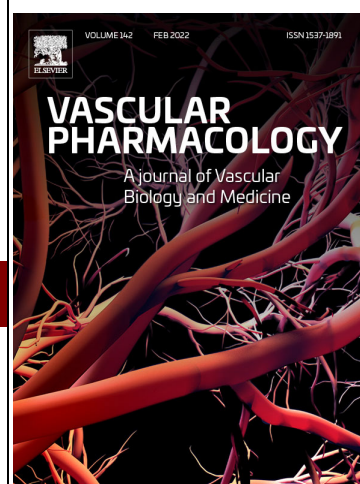
Questions are welcome – CSRearlycareerreviewer@mail.nih.gov



Strategic Partners



Event Partners



Contributors



Sponsors

Recent Member Publications

Industry News

HHMI initiative seeks to advance scientists from underrepresented groups

The [Freeman Hrabowski Scholars Program](#) sponsored by the Howard Hughes Medical Institute is now accepting applications from outstanding basic biomedical researchers, including physician-scientists, who are strongly committed to advancing diversity, equity, and inclusion in science. Over the next 20 years, HHMI expects to hire and support up to 150 early-career faculty as Freeman Hrabowski Scholars, appointed to a five-year renewable term. The program honors the contributions of Dr. Freeman A. Hrabowski III, outgoing president of the University of Maryland, Baltimore County and a major force in increasing the number of scientists, engineers, and physicians from backgrounds underrepresented in science in the United States.

Tips on navigating NIH's Data Management and Sharing Policy

Writing in the [Under the Poliscopes](#) blog, NIH science policy official Lyric Jorgenson describes implementation status of the new NIH Data Management and Sharing Policy (DMS Policy) and highlights resources to help investigators remain compliant. NIH has worked across the agency and with [investigator input](#) to develop a new [resource](#) that shares best practices for developing informed consents to facilitate data/biospecimen storage and sharing for future use. It also provides modifiable sample language that investigators and IRBs can use to assist in the clear communication of potential risks and benefits associated with data/biospecimen storage and sharing. In addition, NIH is requesting public comment on [protecting the privacy](#) of research participants when data is shared. Comments on the draft will be [accepted](#) until June 27, 2022.

COVID-19 and circulatory health

Cardiovascular specialists worldwide are on full alert to provide up-to-date insight on both the acute and long-term effects of SARS-CoV2 infection on the circulatory system. Noting that some symptoms common in coronavirus "long-haulers" may be due to heart problems or just from having been ill with COVID-19, Johns Hopkins cardiologists [Wendy Post and Nisha Gilotra](#) review factors (hypoxia, myocarditis, stress cardiomyopathy, cytokine storm) that may lead to temporary or lasting damage to heart tissue after CoV2 infection. Causative relationships between these factors and long-term circulatory dysfunction remain to be firmly established and remain the focus of intense research.

Originally published in our June 2 issue

Summer Programs



PRIDE CVD-CGE

Cardiovascular Disease Comorbidities, Genetics and Epidemiology July 11-27, 2022 at the University of Washington in St. Louis

The NHLBI-funded "Programs to Increase Diversity Among Individuals Engaged in Health-Related Research" support junior faculty underrepresented in biomedical research.

Space is limited for the mentored program starting summer 2022. [Apply early!](#)

[Learn more . . .](#)

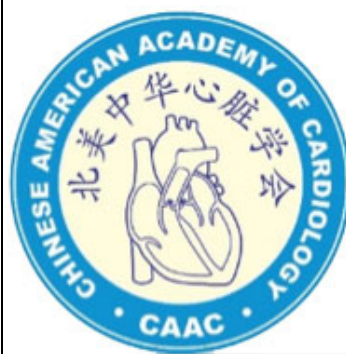
More PRIDE Programs:

- [Cardiovascular Health-Related Research](#) (SUNY Downstate Health Sciences University)
- [Future Faculty of Cardiovascular Sciences](#) (UC San Diego)
- [Research in Implementation Science for Equity](#) (UC San Francisco)

Call for Papers/Proposals



AUSTRALIAN VASCULAR
BIOLOGY SOCIETY



Guests



BMVBS
British Microcirculation &
Vascular Biology Society



Academic
Suma Cum Laude



BRIGHAM AND WOMEN'S
HOSPITAL
CARDIOVASCULAR MEDICINE

Magna Cum Laude

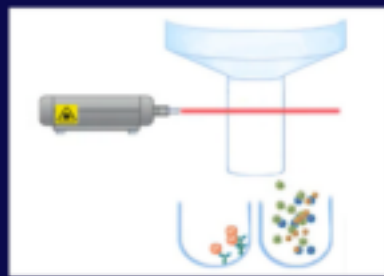


Cum Laude

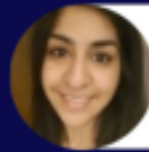


PITTSBURGH HEART, LUNG, AND BLOOD
vmi
VASCULAR MEDICINE INSTITUTE
VITALANT - HCWP - UNIVERSITY OF PITTSBURGH - UPMC

Emerging Methods in Profiling Endothelial Cells at Single-Cell Resolution



Zhen B. Chen
City of Hope,
Department of Diabetes
Complications and
Metabolism



Naseeb Kaur Malhi
City of Hope,
Department of Diabetes
Complications and
Metabolism

JOVE | Methods Collections

Are you using leading-edge techniques to profile endothelial cells at single-cell resolution? Consider submitting your work to a new JoVE collection guest-edited by NAVBO members, **Dr Zhen Bouman Chen** (2020 Springer Junior Investigator Award winner) and Dr. **Naseeb Malhi** at City of Hope! For more information or to submit an abstract, please email zhenchen@coh.org or [follow this link](#).



Lymphatic System: Organ Specific Functions in Health and Disease

Topic Editors: **Tsutomu Kume**, **Young-Kwon Hong**, **Zoltán Jakus** and **Kaska Koltowska**

[Read more](#)

There is a new Research Topic titled **Brain Arteriovenous Malformations: Cerebrovasculature Behaving Badly**, in the journal Frontiers in Human Neuroscience, organized by **Richard Daneman**, **Marcus Stoodley** and **Lori Shoemaker**.

Our goal is to highlight advances in AVM research from the laboratory to the clinic, and to suggest where gaps remain. We also intend to place AVMs in the context of neurovascular development and the complex interactions of cell types within the vasculature and the brain.

We invite high-level original research articles, novel models or imaging methods, focused reviews, hypotheses/theories, and insight/opinion articles. Please consider contributing an article to this topic – it will be a valuable resource for the field. All the details can be found at: <https://www.frontiersin.org/research-topics/30037/brain-arteriovenous-malformations-cerebrovasculature-behaving-badly>

frontiers | Frontiers in Physiology

Novel Adipose Regulation of Vascular Physiology and Cardiovascular Disease

Carolina Restini, Michigan State University, United States
Cameron G McCarthy, University of South Carolina, United States
Jessica Faulkner, Augusta University, United States

Topic Editors



Research Topic
now open for
submissions

Novel Adipose Regulation of Vascular Physiology and Cardiovascular Disease hosted by Drs. Carolina Restini (Michigan State University), **Cameron G. McCarthy** (University of South Carolina School of Medicine) and Jessica L. Faulkner (Medical College of Georgia at Augusta University).

It is well established that adipose tissue has profound influence on organ function via paracrine and endocrine signaling. Specifically, adipose tissue is able to express and secrete various bioactive molecules (e.g. adipokines). However, depending on the type of fat (brown or white), the organ, and the embryological origin, adipose tissues may diverge in the production/secretion of specific metabolites and how they subsequently affect organ function. Therefore, how adipose tissue contributes to homeostatic vascular physiology and the pathogenesis of cardiovascular disease is far-reaching, as are possible therapeutic targets. In this issue, we aim to bring together a collection of state-of-the-art articles that illustrates this potential and contributes significantly to combating the prevalence and incidence of cardiovascular disease by targeting adipose tissue depots.

Submit your paper here: <https://www.frontiersin.org/research-topics/27566/novel-adipose-regulation-of-vascular-physiology-and-cardiovascular-disease>



THE WALL CENTER
PULMONARY VASCULAR DISEASE
@STANFORD

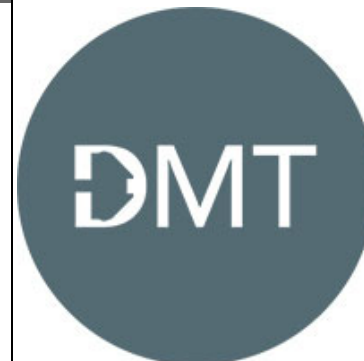
Contributor



Exhibitors



Quantifying Cell Behavior



FUJIFILM
Value from Innovation

VISUALSONICS

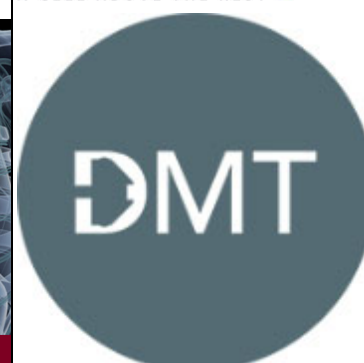


NAVBO

Corporate Partners



Quantifying Cell Behavior



FUJIFILM
Value from Innovation

VISUALSONICS



Miltenyi Biotec



Corporate Members



L I P E D E M A
F O U N D A T I O N



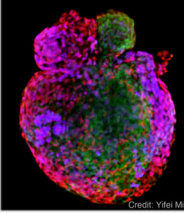
The **Lipedema Foundation (LF)** announces a request for research proposals, soliciting high quality research from scientists and clinicians around the world. The initial LOI calls for ideas that have the potential to define and diagnose Lipedema. We welcome applicants of all backgrounds and career stages to collaborate with the Lipedema Foundation in our mission to share knowledge, support research, and achieve a future without Lipedema.

For more details please visit <https://www.lipedema.org/rfp2022>

The deadline for LOI receipt is July 20, 2022.

frontiers
in Cardiovascular Medicine
Impact factor: 6.05

frontiers
in Pediatrics
Impact factor: 3.418



Molecular Mechanisms Underlying Single Ventricle Defect

Yifei Miao, Cincinnati Children's Hospital Medical Center, United States
Shuyi Nie, Georgia Institute of Technology, United States
Mingtao Zhao, Nationwide Children's Hospital, United States

Topic Editors

Molecular Mechanisms Underlying Single Ventricle Defect hosted by Drs. Yifei Miao (Cincinnati Children's Hospital Medical Center), Shuyi Nie (Georgia Institute of Technology), and Mingtao Zhao (Nationwide Children's Hospital).

Single ventricle defects (SVD) are among the most complex congenital heart problems and manifest as the underdevelopment of one heart chamber and associated valvular structures. We have organized a special issue on **Frontier in Pediatrics and Cardiovascular Medicine** to collect the current progress into understanding the molecular contributions to SVD.

For more information or to submit an abstract, please email us or use this link: <https://www.frontiersin.org/research-topics/37616/molecular-mechanisms-underlying-single-ventricle-defect>

Calendar of Events

June 23, 2022	InFocus - Vascular Diseases and Therapeutics
June 25 - 26, 2022	Gordon Research Seminar - Understanding Endothelial Cell Diversity: Regulation and Regenerative Potential
June 26 - July 1, 2022	Gordon Research Conference - Understanding Endothelial Cell Diversity: Regulation and Regenerative Potential
June 28, 2022	Symposium: Mechanosensory Transduction
July 9 - 13, 2022	ISTH Congress
July 18- 21, 2022	Vasculata 2022
September 17-20, 2022	12th International Kloster Seeon Meeting "Angiogenesis": Molecular Mechanisms and Functional Interactions
September 28 - October 1, 2022	18th Biennial ISACB Meeting
October 13-17, 2022	22nd International Vascular Biology Meeting
October 24 - 27, 2022	Critical Issues in Tumor Microenvironment: Angiogenesis, Metastasis and Immunology

[Visit the NAVBO Calendar of Events for more meetings](#)

Job Postings

Job Title	Company	Location
Assistant, Associate or Full Professor of Cell Biology	University of Virginia	Charlottesville, VA
Postdoctoral fellow	Toronto General Research Institute, University Health Network	Toronto, ON
Research Assistant Professor	University of Illinois Chicago	Chicago, IL
UTSW Postdoctoral Posting	The University of Texas Southwestern Medical Center	Dallas, TX

North American Vascular Biology Organization
18501 Kingshill Road | Germantown, MD 20874
(301) 760-7745

[Mailing Preferences / Unsubscribe](#)

Affiliated Journals



Cardiovascular Pathology

frontiers Impact Factor 6.050
in Cardiovascular Medicine



**North American Vascular Biology
Organization**
18501 Kingshill Road | Germantown, MD
20874
(301) 760-7745
[Unsubscribe](#)

