



Now indexed by Directory of Open Access Journals!  
**JVS-Vascular Science**  
 An Official Society for Vascular Surgery® Journal



Read  
Now!



# NewsBEAT

[Membership](#) | [Events](#) | [Awards](#) | [Resources](#)



**CellBiologics**  
 A CELL ABOVE THE REST  
**Endothelial Cells Human & Mouse**  
 www.cellbiologics.com 1.312.226.8198 service@cellbiologics.com



## 2022 Awardees Announced



### Earl P. Benditt Award Judah Folkman Award

**Joyce Bischoff** has been named the 2022 Earl P. Benditt Awardee. Dr. Bischoff will present her lecture at the 22nd International Vascular Biology Meeting on October 13. For more information about Dr. Bischoff and the Earl P. Benditt Award, go [to our web site](#).

**Stefania Nicoli** is the 2022 Judah Folkman Award in Vascular Biology Recipient. Dr. Nicoli will present her lecture at IVBM 2022. For more information about Dr. Nicoli, click on the Folkman Award tab [on this page](#).

If you would like to nominate a colleague for the 2023 Benditt or Folkman Awards, please go to <https://www.navbo.org/nominations/>

## NAVBO Session at ASIP 2022 at EB

### ASIP Annual Meeting at Experimental Biology Philadelphia, PA - April 2-5, 2022

This is the last Experimental Biology meeting, but the American Society for Investigative Pathology promises an exciting program featuring basic and translational research talks presented by well-known senior and up-and-coming junior scientists and trainees, organized by the ASIP 2022 Program Committee in collaboration with their membership, Scientific Interest Groups, and guest societies – *American College of Veterinary Pathologists (ACVP)*, *American Society for Matrix Biology (ASMB)*, *American Physician Scientists Association (ASPA)*, *Histochemical Society (HCS)*, *National Association of Medical Examiners (NAME)*, **North American Vascular Biology Organization (NAVBO)**, *Società Italiana di Patologia e Medicina Traslazionale/Italian Society of Pathology and Translational Medicine (SIPMeT)*, *Society for Cardiovascular Pathology (SCVP)* and the *Society of Toxicologic Pathology (STP)*.

The 2022 ASIP Annual Meeting includes sessions communicating cutting edge science and translational research, commingled with educational, professional development, and diversity enhancement sessions that will appeal to trainees and junior and senior faculty. As a reflection of the research interests of the ASIP membership, symposia, workshops, mini-symposia, poster blitz, and poster sessions will focus on the latest science in liver pathobiology, neuropathology, gene expression regulation, inflammation, immunopathology, cardiovascular biology, neoplasia, endothelial and epithelial cell biology, fundamental cell biology, artificial intelligence, and big data science.

For more information, [click here](#).

*Early bird registration closes 2/28/22*

### NAVBO session at ASIP 2022:

#### At the Intersection: Cell-Matrix Interactions in Vascular Development and Disease

Chair/Organizer: Beth Kozel, MD, PhD • NHLBI/NIH

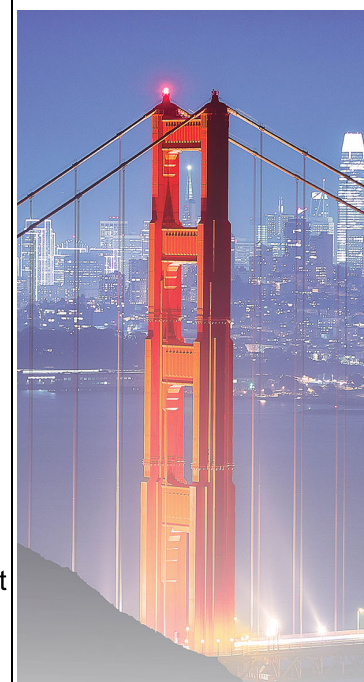
### In this issue...

- 2022 Awards
- ASIP 2022 at EB
- New Terms and Conditions
- Call for Award Nominations
- Symposium Proposals
- Scholarships for Students
- Lab of the Month
- Summer Programs
- Member News
- Spotlight on Trainees
- Member Publications
- Industry News
- Call for Papers
- Calendar of Events
- Job Postings

### Meetings/Events



**Webinars** - 1st Thursday  
**InFocus Sessions** - 2nd and 4th Thursdays  
**Journal Clubs** - 3rd Thursdays  
**Special Sessions** on Tuesdays (check schedule)



**22nd International Vascular Biology Meeting**  
**San Francisco Bay Area**  
 October 13-17, 2022



[www.ivbm2022.org](http://www.ivbm2022.org)

Tuesday, April 5 at 2:00pm

Presentations:

*Temporal and Cell-type Specific Roles of Fibronectin During Formation and Remodeling of the Aortic Arch*

Sophie Astrof, PhD, Rutgers University

*New Genetic Markers of Endothelial Invasion in Collagen Matrices*

Kayla Bayless, PhD, Texas A&M College of Medicine

*Functions of Extracellular Matrix Glycoproteins in the Aortic Wall*

Dieter Reinhardt, PhD, McGill University

*Of Mice and Men: Consequences of Elastic Fiber Disease*

Beth Kozel, MD, PhD • NHLBI/NIH

## NAVBO's Terms and Conditions

### Update for Current NAVBO Members:

As you know, the NAVBO Council has approved Terms and Conditions, which we are asking all members to agree to follow. New members will agree to these terms when applying to NAVBO.

**Existing members will be asked to agree to the Terms and Conditions the next time they log into the Member Portal (<https://members.navbo.org/MIC/login>)**

We are confident that NAVBO members conduct themselves in accordance with these terms in their day to day lives, however, we want all members to see that NAVBO has taken the appropriate steps to deal with any situation that may cause discomfort to any member or anyone participating in a NAVBO activity.

These terms are accessible along with our Privacy Policy, our DEI Statement of Commitment and our meetings' Code of Conduct on this page of our web site: <https://www.navbo.org/policies>

## Call for Award Nominations



Florence R. Sabin Award



Stephen Schwartz Award

Nominations are now being accepted for these awards through March 15, 2022.

As you know, the Stephen M. Schwartz Award recognizes an outstanding mentor, characterized by our 2021 recipient, Brant Weinstein of NICHD/NIH. Current and prior trainees should nominate their mentors.

Our newest award, the Florence Sabin Award, recognizes an individual, like Dr. Sabin, who has championed an underrepresented group. Candidates must have distinguished themselves in at least one of the following areas: promoting diversity, equity, and inclusion in social issues which benefit underrepresented groups, public health, or public service to the broader community, in addition to their scientific/clinical accomplishments.

[Click here for information about nominating a colleague.](#)

## Seeking Proposals for Symposia

**NAVBO Regular Members are invited to submit a proposal for consideration as an Online Symposium.** Our goals in this regard are two-fold: to bring additional, timely and member-initiated topics to the vascular biology community and to promote diversity, equity and inclusion.

These symposia are usually three experts on a single topic. The member that proposes the session will also moderate/chair the session.

**To submit your proposal complete the online form [found here.](#)**

## Member Scholarships for Students

NAVBO's **Advancing Young Voices through Diversity and Inclusion Program (AYVDI)** supports diversity and inclusion efforts at the undergraduate and graduate student career stages. To date, this program has supported the trainee membership of 50 students.

We want to continue to increase diversity and inclusion within the vascular biology community, expose more young scientists to the field of vascular biology, and to bring more trainees into this collaborative community. Therefore, we are extending the offer of free membership to students who are members of populations that are not well represented in vascular biology, including but not

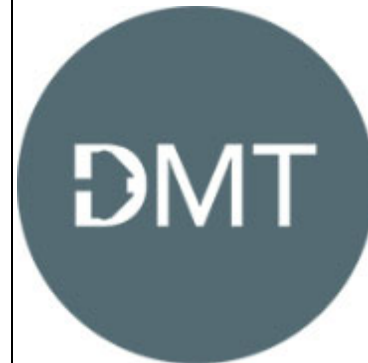
Webinar Series



Corporate Partners



Quantifying Cell Behavior



FUJIFILM  
Value from Innovation

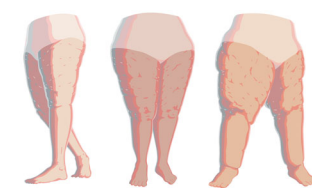
VISUALSONICS



Miltenyi Biotec



Corporate Members



LIPEDEMA  
FOUNDATION



IVBM Supporters



Center for Interdisciplinary Cardiovascular Sciences  
Brigham and Women's Hospital  
Harvard Medical School



JCI The Journal  
of Clinical Investigation

ScienceAdvances  
AAAS

IVBM Exhibitors

limited to Black/African American, Latinx/Hispanic, Indigenous Peoples of America/Native American (including Native Hawaiian and Alaskan), and LGBTQ+. We would also like to extend this offer to students who may be at a financial disadvantage and would benefit from this opportunity.

In order to take advantage of this offer, complete this [application form](#).

Please share this information with your students and colleagues.

## Lab of the Month

### Principal Investigator



Dr. Claudia Rodrigues

### Junior faculty



Dr. Jacqueline Machi



Dr. Janet Menzie-Sudaram

### Postdoctoral Associate



Dr. Lara Mario

### Graduate Students



Nimesh Katuwal



Nicole Jimenez

## Lab of the Month - February 2022

### The Lab of Dr. Claudia Rodrigues

This month we are highlighting the lab of Dr. Claudia Rodrigues, who is an Associate Professor at Florida Atlantic University. Find out more about Dr. Rodrigues' lab by visiting [her page](#) in our Lab of the Month listing.

## Summer Programs



## PRIDE CVD-CGE

Cardiovascular Disease Comorbidities, Genetics and Epidemiology  
July 11-27, 2022 at the University of Washington in St. Louis

The NHLBI-funded "Programs to Increase Diversity Among Individuals Engaged in Health-Related Research" support junior faculty underrepresented in biomedical research.

Space is limited for the mentored program starting summer 2022.  
**Apply early!**

[Learn more . . .](#)

## More PRIDE Programs through NHLBI:

- [Cardiovascular Health-Related Research](#) (SUNY Downstate Health Sciences University)
- [Future Faculty of Cardiovascular Sciences](#) (UC San Diego)
- [Research in Implementation Science for Equity](#) (UC San Francisco)



Children's Hospital of Pittsburgh offers an eight-week paid summer internship program designed for undergraduate students from underrepresented groups from any college or university who wish to learn the rationale, design strategies, methods and other aspects of biomedical research by engaging in studies related to the heart, lung and blood fields under the direct supervision of experienced researchers.

FUJIFILM  
Value from Innovation

VISUALSONICS

frontiers Impact Factor 6.050  
in Cardiovascular  
Medicine

VB2021 Supporters

BWH CICS  
Center for Interdisciplinary Cardiovascular Sciences  
Brigham and Women's Hospital  
Harvard Medical School

REGENERON  
AMGEN®

LSU Health Shreveport  
CENTER FOR CARDIOVASCULAR  
DISEASES AND SCIENCES

OMRF

The Company of  
Biologists

GORE

NOVARTIS

DEPARTMENT OF BIOENGINEERING  
UNIVERSITY of WASHINGTON

frontiers Impact Factor 6.050  
in Cardiovascular  
Medicine

VB2021 Exhibitors

FUJIFILM  
Value from Innovation

VISUALSONICS



L I P E D E M A  
F O U N D A T I O N



Miltenyi Biotec

VB21 Guest Society



Affiliated Journals

Applications for the 2022 program will be available on-line at [www.chp.edu](http://www.chp.edu) in early January 2022. Selected participants are notified in April. The 2022 program will commence in June and conclude at the end of July. Participants are expected to complete the 8-week program. Housing is provided.

Please [download the flyer](#) and post it.

[Learn more . . .](#)

## Member News

### Welcome to our New Members:

Wen Yih Aw, UNC/NCSU  
Mark Chandy, Western University  
Yingye Fang, University of Washington, Seattle  
Julie Freed, Medical College of Wisconsin  
Helios Gallego Gutierrez, UCSD  
Peter Quicke, The Francis Crick Institute  
Katharina Schimmel, Stanford University  
George Truskey, Duke University

*If you have news to share with your colleagues, send it to [membership@navbo.org](mailto:membership@navbo.org)*

## Spotlight on Trainees

### Sifting the paradoxical impacts of the COVID-19 pandemic on student well-being

Varadarajan and colleagues at Vanderbilt, [writing in the 9/16/21 issue of PLoSOne](#), explore the impacts of COVID-19-associated university closures and research interruptions on learning and sense of well-being of first year and senior biomedical sciences PhD students. Survey responses indicate that university closure affected negatively the overall psychological health of about one-third of student respondents, with perturbed time management associated with the highest stress for nearly half of the students. Forgone interaction with peers and loss of in-person discussions were missed most acutely during the remote learning interval. On the other hand, responding students also revealed positive associations with remote learning, such as increased time spent with family, on self-care, or for dissertation or manuscript writing. "It's an ill wind that blows nobody any good."

## Recent Member Publications

### VE-Cadherin Is Required for Cardiac Lymphatic Maintenance and Signaling

**Circulation Research**

The adherens protein VE-cadherin (vascular endothelial cadherin) has diverse roles in organ-specific lymphatic vessels. However, its physiological role in cardiac lymphatics and its interaction with lymphangiogenic factors has not been fully explored. [Read more](#)

### JAGGED1/NOTCH3 activation promotes aortic hypermuscularization and stenosis in elastin deficiency

**Journal of Clinical Investigation**

Obstructive arterial diseases including supraaortic stenosis (SVAS), atherosclerosis and restenosis share two important features: an abnormal or disrupted elastic lamellae structure and excessive smooth muscle cells (SMCs). However, the relationship between these pathological features is poorly delineated. [Read more](#)

### Distinct roles of KLF4 in mesenchymal cell subtypes during lung fibrogenesis

**Nature Communications**

During lung fibrosis, the epithelium induces signaling to underlying mesenchyme to generate excess myofibroblasts and extracellular matrix; herein, we focus on signaling in the mesenchyme. Our studies indicate that platelet-derived growth factor receptor (PDGFR)- $\beta^+$  cells are the predominant source of myofibroblasts and Kruppel-like factor (KLF) 4 is upregulated in PDGFR- $\beta^+$  cells, inducing TGF $\beta$  pathway signaling and fibrosis. [Read more](#)

### Renal microvascular endothelial cell responses in sepsis-induced acute kidney injury

**Nature Reviews Nephrology**

Microvascular endothelial cells in the kidney have been a neglected cell type in sepsis-induced acute kidney injury (sepsis-AKI) research; yet, they offer tremendous potential as pharmacological targets. As endothelial cells in distinct cortical microvascular segments are highly heterogeneous, this Review focuses on endothelial cells in their anatomical niche. [Read more](#)

### Engineered ACE2 decoy mitigates lung injury and death induced by SARS-CoV-2 variants

**Nature Chemical Biology**

Vaccine hesitancy and emergence of severe acute respiratory syndrome coronavirus 2 (SARS-CoV-2) variants of concern (VOCs) escaping vaccine-induced immune responses highlight the urgency for new COVID-19 therapeutics. Engineered angiotensin-converting enzyme 2 (ACE2) proteins with augmented binding affinities for SARS-CoV-2 spike (S) protein may prove to be especially efficacious against multiple variants. [Read more](#)



## Cardiovascular Pathology

 **frontiers** Impact Factor 6.050  
in Cardiovascular  
Medicine

### Mitophagy mediates metabolic reprogramming of induced pluripotent stem cells undergoing endothelial differentiation

Journal of Biological Chemistry

Pluripotent stem cells are known to shift their mitochondrial metabolism upon differentiation, but the mechanisms underlying such metabolic rewiring are not fully understood. We hypothesized that during differentiation of human induced pluripotent stem cells (hiPSCs), mitochondria undergo mitophagy and are then replenished by the biogenesis of new mitochondria adapted to the metabolic needs of the differentiated cell. [Read more](#)

### Aortic intimal resident macrophages are essential for maintenance of the non-thrombogenic intravascular state

Nature Cardiovascular Research

Leukocytes and endothelial cells frequently cooperate to resolve inflammatory events. In most cases, these interactions are transient in nature and triggered by immunological insults. Here, we report that, in areas of disturbed blood flow, aortic endothelial cells permanently and intimately associate with a population of specialized macrophages. [Read more](#)

### Ileitis-associated tertiary lymphoid organs arise at lymphatic valves and impede mesenteric lymph flow in response to tumor necrosis factor

Immunity

Lymphangitis and the formation of tertiary lymphoid organs (TLOs) in the mesentery are features of Crohn's disease. Here, we examined the genesis of these TLOs and their impact on disease progression. [Read more](#)

If you have a recent paper that you would like to share with NAVBO NewsBEAT subscribers, send the title and link to [membership@navbo.org](mailto:membership@navbo.org). Please note, only papers authored by current NAVBO members are accepted for inclusion.

## Industry News

### Neuromodulation prize competition accepting applications

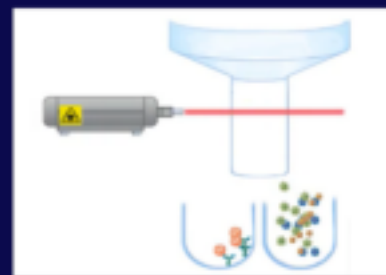
The Science & PINS Prize for Neuromodulation is awarded for innovative research that selectively modifies neural activity through physical (electrical, magnetic, optical) stimulation of sites in the nervous system with implications for translational medicine. Established in 2016, the prize is awarded annually for outstanding research as described in a 1,500 word essay that provides an account of research performed within the past three years. The winner receives US\$25k and will have his or her essay published in journal Science. The Grand Prize essay and that of the Runner-up are also published on Science Online. Deadline for [submitting applications](#) is March 15, 2022.

### Early Career Women Faculty Leadership Development Seminar

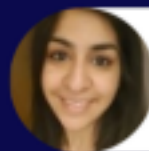
Are you an Assistant Professor at an AAMC member school of medicine, with a minimum of two years of experience in your role? If so, make note of the [Early Career Women Faculty Leadership Development Seminar](#) to be held July 19-22, 2022, at the Hyatt Regency in Minneapolis. The seminar curriculum aims to equip participants with leadership knowledge and skills to enable participants to better prepare for advancement and promotion. This popular program has limited capacity and important changes to the application process will take effect during the 2022 application cycle. The application period opens in mid-February.

## Call for Papers

### Emerging Methods in Profiling Endothelial Cells at Single-Cell Resolution



**Zhen B. Chen**  
City of Hope,  
Department of Diabetes  
Complications and  
Metabolism



**Naseeb Kaur Malhi**  
City of Hope,  
Department of Diabetes  
Complications and  
Metabolism

Are you using leading-edge techniques to profile endothelial cells at single-cell resolution? Consider submitting your work to a new JoVE collection guest-edited by NAVBO members, **Dr Zhen Bouman Chen** (2020 Springer Junior Investigator Award winner) and Dr. **Naseeb Malhi** at City of Hope! For more information or to submit an abstract, please email [zhenchen@coh.org](mailto:zhenchen@coh.org) or [follow this link](#).



## Lymphatic System: Organ Specific Functions in Health and Disease

Topic Editors: Tsutomu Kume, Young-Kwon Hong, Zoltán Jakus and Kaska Koltowska

The journal *Frontiers in Cell and Developmental Biology* has launched a new Research Topic on “Lymphatic System: Organ Specific Functions in Health and Disease” to feature the cellular and molecular mechanisms that govern the formation and regulation of lymphatic vascular heterogeneity in different organs/tissues. This Research Topic will be edited by Dr. Tsutomu Kume (Northwestern University, USA), Dr. Young-Kwon Hong (University of Southern California, USA), Dr. Zoltán Jakus (Semmelweis University Budapest, Hungary) and Dr. Kaska Koltowska (Uppsala University, Sweden).

The intent of the Research Topic is to enhance understanding of organ-specific lymphatic functions in health and disease. The scope of the Research Topic is to focus on recent and novel advances in lymphatic vascular heterogeneity and organ-specific lymphatic functions with an emphasis on cellular and molecular processes. We welcome original research, reviews, and opinion articles, falling under, but not limited to, the following areas:

- Organ-specific lymphatic cell identity and origin
- Lymphatic vessel morphogenesis in different organs
- Organ-specific lymphatic function
- Impaired organ-specific lymphatic function in pathological processes
- Signaling pathways under physiological and pathological conditions
- Cell-cell communication
- Organotypic chemokines and cytokines
- Organ-specific modulation of immune responses

Deadline for abstract: January 15, 2022

Deadline for manuscript: May 21, 2022

[Visit this website for more information.](#)

There is a new Research Topic titled ***Brain Arteriovenous Malformations: Cerebrovasculature Behaving Badly***, in the journal *Frontiers in Human Neuroscience*, organized by **Richard Daneman**, Marcus Stoodley and **Lori Shoemaker**.

Our goal is to highlight advances in AVM research from the laboratory to the clinic, and to suggest where gaps remain. We also intend to place AVMs in the context of neurovascular development and the complex interactions of cell types within the vasculature and the brain.

We invite high-level original research articles, novel models or imaging methods, focused reviews, hypotheses/theories, and insight/opinion articles. Please consider contributing an article to this topic – it will be a valuable resource for the field. All the details can be found at: <https://www.frontiersin.org/research-topics/30037/brain-arteriovenous-malformations-cerebrovasculature-behaving-badly>

## Calendar of Events

February 10, 2022	<a href="#">InFocus - Vascular Control of Organ Function</a>
February 17, 2022	<a href="#">Journal Club - February 2022</a>
February 24, 2022	<a href="#">InFocus - Vascular Aging</a>
March 3, 2022	<a href="#">Webinar Featuring Paolo Madeddu</a>
March 18-19, 2022	<a href="#">4th Annual Gulf Coast Vascular Research Consortium</a>
April 2 - 5, 2022	<a href="#">ASIP Annual Meeting at Experimental Biology 2022</a>
October 13-17, 2022	<a href="#">22nd International Vascular Biology Meeting</a>
October 24 - 27, 2022	<a href="#">Critical Issues in Tumor Microenvironment: Angiogenesis, Metastasis and Immunology</a>

[Visit the NAVBO Calendar of Events for more meetings](#)



## Job Postings

Job Title	Company	Location
<a href="#">Postdoctoral Fellow – Cardiovascular</a>	University of Pittsburgh	Pittsburgh, PA

Biology

Postdoctoral Opportunities

Harvard Medical School

Boston, MA

Postdoctoral Fellows

University of Michigan

Ann Arbor, MI

Postdoctoral Researcher

University of Pennsylvania

Philadelphia, PA

Postdoctoral Fellow

Alpert Medical School at Brown University

Providence, RI

Postdoctoral Research Fellowship in Tissue Engineering: Harvard Medical School

Beth Israel Deaconess Medical Center

Boston, MA

Postdoctoral Research Fellowship in Cancer-Associated Thrombosis: Harvard Medical School

Beth Israel Deaconess Medical Center

Boston, MA

**North American Vascular Biology Organization**

18501 Kingshill Road | Germantown, MD 20874  
(301) 760-7745

[Mailing Preferences / Unsubscribe](#)



**North American Vascular Biology Organization**

18501 Kingshill Road | Germantown, MD 20874  
(301) 760-7745

[Unsubscribe](#)

