



NewsBEAT

[Membership](#) | [Events](#) | [Awards](#) | [Resources](#)



CellBiologics
A CELL ABOVE THE REST
Endothelial Cells Human & Mouse
www.cellbiologics.com 1.312.226.8198 service@cellbiologics.com



Vasculata - Abstract Deadline Extended

Vasculata 2023
July 17-20, 2023
Tulane University

Early bird registration discount ends May 31, 2023
Abstracts due May 19, 2023

See the Preliminary Program -
<https://navbo.org/vasculata>

Vasculata 2023 will be held at Tulane University in New Orleans from July 17-20, 2023. The meeting is being organized by **Dr. Amitabh Pandey** of Tulane and will feature NAVBO members: **Wayne Orr**, LSU Health Science Center at Shreveport; **Jorge A Castorena-Gonzalez**, **Jennifer Fang** and **Stryder Meadows**, Tulane University; and **Patty Lee**, Icahn School of Medicine at Mount Sinai, as the Keynote Lecture.

Exciting labs have been added - click on the Workshops tab on the web site. Register soon, these are small group labs that will fill up quickly.

Registration and abstract submission sites are open. Go to <https://navbo.org/vasculata> for more information.

Early bird registration ends May 31, 2023!
[Click here to register](#)

Extended - Abstract Submissions are due May 19, 2023
[Submit your abstract](#)
Selected abstracts will be chosen for short talks

Scholarships are available - [complete this form](#).
Extended - Applications are due May 15 -
[see the website for details](#).

Vascular Biology 2023



October 15-19, 2023
Newport, Rhode Island, USA

Visit the web site to view the entire program -
<https://navbo.org/vb2023>

The meeting begins on Sunday evening, October 15 with a Keynote Lecture by **Luisa Iruela-Arispe**, Northwestern University and the Benditt Award Lecture by **Miikka Vikkula**, de Duve Institute, University of Louvain, and concludes on Thursday, October 19 at 1:00pm with a general session on Plasticity of the Vasculature. New this year, we will have concurrent sessions in all four "workshop" themes: Development & Genetics, Inflammation, Signaling, and Matrix Biology and Bioengineering. The **Microcirculatory Society** is meeting with us and we will host their Landis Award Lecture and Dr. Pooneh Bagher's President's Symposium.

Special package deals are available for labs of four, five and six members (must be NAVBO members). Details are on the

In this issue...

- Vasculata 2023
- Vascular Biology 2023
- Lymphatic Forum
- Travel Awards for Other Mtgs
- Lessons Learned
- Member News
- Lab of the Month
- NAVBO Committees
- Spotlight on Trainees
- Member Publications
- Industry News
- Summer Program
- Call for Papers/Proposals
- Calendar of Events
- Job Postings

Did someone forward this newsletter to you?

Want keep up to date on opportunities in the vascular biology community?

Not a NAVBO member?

Subscribe Here

Tune into NAVBO's Podcast - new episodes monthly.

**VASCULAR
CROSSTALK**



BY NAVBO

Meetings/Events



Vasculata 2023
July 17-20, 2023
Tulane University,
New Orleans, LA

Preliminary Program available on the web site



Super Early Bird registration ends on June 30!
Register early to save big!!!!
Early Bird will end August 31

We are also accepting abstracts - deadline is August 1, 2023!
Submit your abstract here

Download the flyer and post it in your lab
Thank you!

Lymphatic Forum 2023



The Lymphatic Forum 2023 (LF2023) will be held at the Banff Center from June 13-17, 2023. This is the fifth iteration of this biennial event that brings together researchers from around the world to present and discuss studies of lymphatics in health and disease. This year's event will address the significant role and functions of the lymphatic system in the various organs of the human body. Be sure to register soon. For more information and the full program, visit the web site: <http://lymphaticforum.org>

Please note that our hotel room block is filled. Be sure you can find a room prior to registering. Search for hotels near the Banff Centre in downtown Banff.

Register for the meeting here
Register before June 12, 2023

Travel Awards for Other Meetings

NAVBO is sponsoring Travel Awards for our trainee members to attend the following conferences:

- GRC on Angiogenesis and Angiostability in Development, Disease and Engineered
- GRC on Atherosclerosis: Molecular Mechanisms, Genomic Modifiers and Emerging Therapies
- GRC on Biomechanics in Vascular Biology and Disease: Integrating Vascular Mechanics, Biology and Medicine
- 5th Annual Gulf Coast Vascular Research Consortium

For more information, go to <https://www.navbo.org/trainee-awards/> and click on the "Travel Awards - Other" tab.

Lessons Learned



Dr. Rio Sugimura, MD, PhD

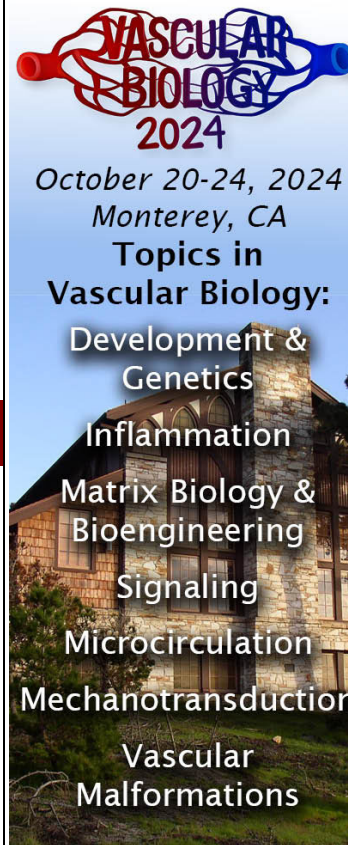
Hello, my name is Rio Sugimura, and I have been an Assistant Professor at the University of Hong Kong since December 2020. I am grateful to NAVBO, a very supportive society, for giving me this opportunity. I run two laboratories in different institutions and study cancer immunotherapy. I will share my survival tips and of course, the struggles of starting a lab in the pandemic era. I was trained in the US and now run my labs in Asia; some tips may be helpful to PIs in

the same position.

Generation pandemic

Same as many other New PIs, I started my lab during the pandemic in Hong Kong, in December 2020. I had initially set up my lab at the University of Pavia, northern Italy, which was the epicenter of the pandemic. It was a hard decision, but I took the counteroffer and moved to Hong Kong with my family. I believe the decision was right for the following reasons: A reasonable amount of start-up money, supportive admin, an R1 institution-equivalent environment for research, and most importantly, English as a common language (I do not speak Cantonese or Mandarin). Luckily, Hong Kong never encountered a complete lab shutdown during the pandemic-- unlike labs in other major cities in China or the US, we were able to continue operating our lab. There were two drawbacks though, one was the delayed order of items sometimes having to wait for 6 months or give up the experiments. But we were able to manage this by looking for different vendors, and now we do not see such delays as often. The other, more severe, was difficulty in traveling, although the rest of the world was going back to normal. This affects the international visibility of the lab, which I will talk about more in a later section.

[Read more of Dr. Sugimura's Lessons Learned here.](#)



Preliminary Program available on the web site:
<https://navbo.org/vb2024>



Webinars - 1st Thursday
InFocus Sessions - 2nd and 4th Thursdays
Journal Clubs - 3rd Thursdays
Special Sessions on Tuesdays
(check schedule)

IVBM 2022 Supporters

We gratefully acknowledge the support of the following societies, academic centers and corporations.

Grant



Corporate Support Diamond Level



Gold Level Partner



Strategic Partners





Mahdi Garelnabi to lead UMass Lowell Equity Office

Mahdi Garelnabi, Associate Professor of Biomedical and Nutritional Sciences at UMass Lowell, has been appointed Director of his institution's [ADVANCE Office for Faculty Equity](#). Dr. Garelnabi, whose research focuses on lipid biochemistry in the context of cardiovascular disease, is the current chair of NAVBO's Diversity, Equity and Inclusion Committee. Mahdi will succeed founding OFE Director Meg Bond, Professor of Psychology and Director of the Center for Women and Work. Dr. Bond noted that Mahdi "...brings tremendous DEI-related experience that will allow him to build upon past OFE successes while also crafting new innovative approaches to the challenge of promoting faculty equity." Congratulations and best wishes for success, Mahdi!

Welcome to our New Members:

Katherine Alexander, University of Illinois College of Medicine
 Wenxi An, University of Pittsburgh
 Carmel Assa, Medical College of Wisconsin
 Matthew Birney, Embry-Riddle Aeronautical University
 Kylie Browne, Tulane University
 Rachel Cahalane, Brigham and Women's
 Giulio Fulgoni, Yale University
 Lyndsey Gisclair, Louisiana State University Health Sciences Center
 Albert Gonzales, University of Nevada, Reno School of Medicine
 Brayden Halvorson, Western University
 Daniel Howsmon, Tulane University
 David Jones, The University of New Mexico Health Sciences Center
 Negin Khosraviani, University of Toronto
 Skylar King, University of Missouri
 Brandon Kirby, West Virginia University School of Medicine
 Jihui Lee, Washington University in St. Louis
 Abeer Mohamed, University of Illinois at Chicago
 Silvia Montaner, University of Maryland
 Eunice Oribamise, University of Minnesota
 Soumiya Pal, University of Arkansas for Medical Sciences
 Priya Raman, Northeast Ohio Medical University
 Mark Renton, Virginia Tech, Fralin Biomedical Research Institute
 Leda Restrepo, Johns Hopkins
 Trevor Self, Texas A&M University
 Sharanee Sytha, Texas A&M University
 Alexander Yu, Institute of Molecular Bioscience

If you have news to share with your colleagues, send it to membership@navbo.org

Lab of the Month



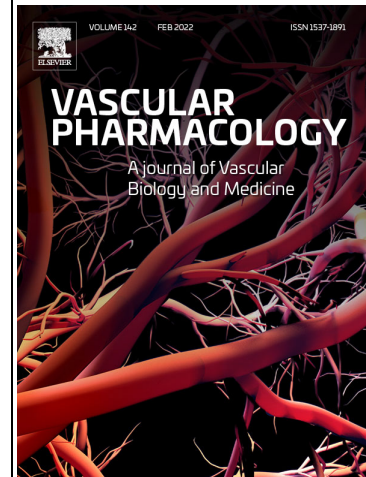
Lab of the Month - May 2023

The Lab of Dr. Rio Sugimura

This month we are highlighting the lab of Dr. Rio Sugimura, Assistant Professor at the University of Hong Kong. Find out more about his lab by visiting [his page](#) in our Lab of the Month listing.



Event Partners



Contributors



Participating Societies

Partners



NAVBO Committees

NAVBO is currently recruiting members for its Communications, Communities, Diversity, Equity and Inclusion, Education, and Membership Committees. These committees offer their members numerous opportunities to engage with fellow NAVBO members.

If you are interested in getting more involved with NAVBO, there are many opportunities. Details and descriptions of each committee are included at the top of the application form.

Complete this form.

Please note - Membership in a committee is limited to active NAVBO members.

Spotlight on Trainees

National Science Foundation-sponsored research opportunities for undergraduates

From NSF Program Solicitation [NSF 22-601](#): The Research Experiences for Undergraduates (REU) program aims to provide appropriate and valuable educational experiences for undergraduate students through participation in research. REU projects, which feature high-quality interaction of students with research mentors, offer an opportunity to tap the nation's diverse student talent pool and broaden participation in science and engineering. NSF is particularly interested in increasing the numbers of women, underrepresented minorities, and persons with disabilities in research. REU projects may be carried out during the summer months, during the academic year, or both. Three years is the typical duration for REU Site awards in most NSF directorates; however, a duration of up to five years may be allowed in some cases.

Recent Member Publications

Rbpj Deficiency Disrupts Vascular Remodeling via Abnormal Apelin and Cdc42 (Cell Division Cycle 42) Activity in Brain Arteriovenous Malformation

Stroke

Brain arteriovenous malformations (bAVM) are characterized by enlarged blood vessels, which direct blood through arteriovenous shunts, bypassing the artery-capillary-vein network and disrupting blood flow. Clinically, bAVM treatments are invasive and not routinely applicable. [Read More](#)

Molecular profiling of the stroke-induced alterations in the cerebral microvasculature reveals promising therapeutic candidates

PNAS

Stroke-induced cerebral microvascular dysfunction contributes to aggravation of neuronal injury and compromises the efficacy of current reperfusion therapies. Understanding the molecular alterations in cerebral microvessels in stroke will provide original opportunities for scientific investigation of novel therapeutic strategies. [Read More](#)

Dissecting aortic aneurysm in Marfan syndrome is associated with losartan-sensitive transcriptomic modulation of aortic cells

Journal of Clinical Investigation Insight

To improve our limited understanding of the pathogenesis of thoracic aortic aneurysm (TAA) leading to acute aortic dissection, single-cell RNA sequencing (scRNA-seq) was employed to profile disease-relevant transcriptomic changes of aortic cell populations in a well-characterized mouse model of the most commonly diagnosed form of Marfan syndrome (MFS). [Read More](#)

If you have a recent paper that you would like to share with NAVBO NewsBEAT subscribers, send the title and link to membership@navbo.org. *Please note, only papers authored by current NAVBO members are accepted for inclusion.*

Industry News

AAMC response to NIH call for comments on simplified review process

The American Association of Medical Colleges has submitted a [detailed response](#) to NOT-OD-23-034 from the NIH, which solicited public input on a proposed revised framework for evaluating and scoring peer review criteria. While supportive of the NIH's objectives for the review process revision, the AAMC expressed misgivings that the proposed reduction of the current five review criteria to three would achieve the desired reductions in reviewer bias and burden. Alternatively, AAMC floated a two-tiered review model: a blinded review of aims followed by consideration of the applicant's and institution's capabilities. The organization further advocated diversification of study sections and scored objectives, anti-bias training, and other measures intended to enhance fairness.

Neurobiology Prize open for applications

The international [Eppendorf & Science Prize](#) for Neurobiology is now accepting applications for 2023. The prize is awarded annually to a young scientist (not older than 35) whose neurobiological research using methods of molecular and cell biology conducted during the past three years is judged most outstanding. The prize includes US\$25,000 and publication of the



Sponsors



AUSTRALIAN VASCULAR
BIOLOGY SOCIETY



INTERNATIONAL SOCIETY FOR
Applied
Cardiovascular
Biology



Guests



BMVBS
British Microcirculation &
Vascular Biology Society



Academic
Summa Cum Laude



BRIGHAM AND WOMEN'S
HOSPITAL
CARDIOVASCULAR MEDICINE

UIC UNIVERSITY OF ILLINOIS
COLLEGE OF MEDICINE

Magna Cum Laude

Northwestern Medicine
Feinberg School of Medicine

winning essay in Science magazine. Applications, consisting of a 1000-word essay describing the research, are due June 15, 2023.

Implanted human vasculature to model pathogen interactions in mice

Writing in *iScience*, Schonherr-Hellec and colleagues describe their efforts to develop animal models suitable for studying interactions of pathogens with human microvasculature. The French investigators implanted engineered human mature microvasculature (endothelial and perivascular cells embedded in collagen hydrogel) into mice, allowing in vivo functional investigation of pathogen interactions with the endothelium. Beyond their description of *Neisseria meningitidis* as a model pathogen, the authors posit a broader utility of 'human microvasculaturized mice' that incorporate genetically-engineered or patient-derived human perivascular and endothelial cells.

Summer Programs

Institute for Public Health Summer Research Program

CARDIOVASCULAR DISEASE & HEMATOLOGY



Students in our *new* Summer Research Diversity Program in Cardiovascular Disease & Hematology (RADIANCE) track learn about the broad scope of heart and blood disorders and their interdisciplinary and multidimensional impact.

Washington University in St. Louis
INSTITUTE FOR PUBLIC HEALTH

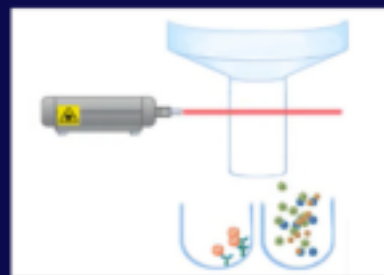
This program is supported by the National Heart, Lung, and Blood Institute (NHLBI).

Contact us: radiance@wustl.edu

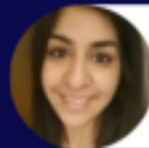
[Click here for more information.](#)

Call for Papers/Proposals

Emerging Methods in Profiling Endothelial Cells at Single-Cell Resolution



Zhen B. Chen
City of Hope,
Department of Diabetes
Complications and
Metabolism



Naseeb Kaur Malhi
City of Hope,
Department of Diabetes
Complications and
Metabolism

JOVE | Methods Collections



biomolecules

an Open Access Journal by MDPI

IMPACT
FACTOR
6.064

Indexed in:
PubMed

Barrier Formation and Homeostasis in the Vertebrate Brain

Guest Editors

Prof. Dr. Ramani Ramchandran, Dr. Karthikeyan Thirugnanam, Dr. Ankan Gupta

Deadline

15 June 2023

Special Issue

[mdpi.com/si/151961](https://www.mdpi.com/si/151961)

Invitation to submit

Barrier Formation and Homeostasis in the Vertebrate Brain

In this Special Edition, the guest editors, including **Ramani Ramchandran, Medical College of Wisconsin**, invite you to submit articles that study the various barriers associated with child and adult brains, such as the blood–brain barrier, blood–retinal barrier, blood–lymph barrier and the blood–cerebrospinal fluid barrier. Studies focused on cell–cell interactions and the mechanisms underlying barrier formation or disruption are welcome. Approaches utilizing 3D microfluidic-based primary cell culture model systems, organoids, induced pluripotent stem cells, zebrafish, rodent model systems and human brain tissue are welcome. Computational modelling studies that mimic and provide novel hypotheses in barrier formation will also be considered. In general, we are interested in a multi-faceted innovative approach to barrier formation in vertebrates, and its role in disease. Endothelial barrier formation in tissues outside the brain will also be considered on a case-by-case basis. Original articles, reviews, hypotheses, and perspectives are welcome. Studies must be focused on basic science using in vitro, in vivo, and pre-clinical models. Manuscripts with exclusive clinical studies will not be considered.

<https://www.mdpi.com/si/151961>

Deadline for manuscript submission is June 15, 2023.

Calendar of Events

May 11, 2023 [InFocus - Pericytes](#)

May 23, 2023 [Symposium: Mechanisms of Vascular Remodeling](#)



Cum Laude



THE WALL CENTER
PULMONARY VASCULAR DISEASE
@STANFORD

Contributors



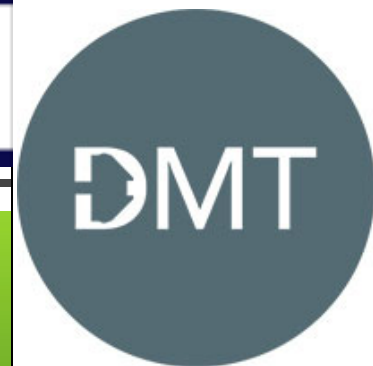
UNIVERSITY OF HELSINKI



Exhibitors



**Applied
BioPhysics**
Quantifying Cell Behavior



FLUXION



Value from Innovation

VISUALSONICS



Miltenyi Biotec



nanoAnalytics

cellZscope
impedance-based cell monitoring
distributed by **BIOMETROLOGY**

May 25, 2023	InFocus - Endothelial-to-mesenchymal transition (EndMT)
June 1, 2023	Webinar with IVBM Speakers Gwendalyn Randolph and Amreen Mughal
June 6, 2023	Career Development Forum: Transitioning from Postdoc to Faculty
June 13 - 17, 2023	Lymphatic Forum 2023
June 18 - 23, 2023	GRC - Molecular Mechanisms, Genomic Modifiers and Emerging Therapies
July 17 - 20, 2023	Vasculata 2023
July 23 - 28, 2023	Gordon Research Conferences 2023 on Elastin, Elastic Fibers, and Microfibrils
July 30 - August 4, 2023	GRC - Angiogenesis and Angiostability in Development, Disease and Engineered Tissues
August 4 - 5, 2023	5th Annual Gulf Coast Vascular Research Consortium (GVRC)
August 6 - 11, 2023	Gordon Research Conferences 2023 in Biomechanics on Vascular Biology and Disease
October 5 - 7, 2023	Lipedema World Congress
October 15 - 19, 2023	Vascular Biology 2023
October 24 - 27, 2023	Critical Issues in Tumor Microenvironment: Angiogenesis, Metastasis and Immunology

[Visit the NAVBO Calendar of Events for more meetings](#)

Job Postings

Postdoctoral Scholar	Northwestern University, Feinberg School of Medicine	Chicago, IL
Postdoctoral Fellow	University of Illinois at Chicago	Chicago, IL
PhD Studentship in vascular physiology	Anglia Ruskin University	Cambridge, England, UK
Postdoctoral Fellow, Lung Homeostasis and Aging - Gillich Lab	Calico Life Sciences	South San Francisco, CA
Research Fellow in Retinal Vascular Biology	UCL Institute of Ophthalmology	London, England, UK

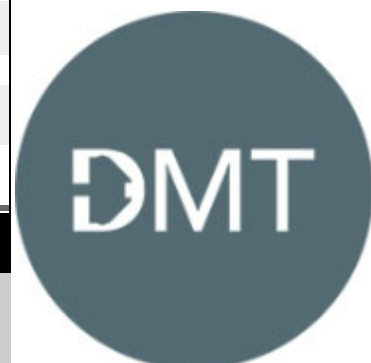
Are You An Employer?
[Post a Job!](#)

Post an open position today!

30-day postings are free for NAVBO members (a savings of \$200)



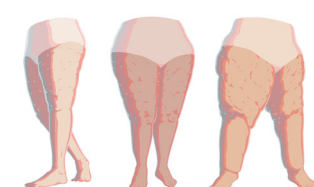
NAVBO
Corporate Partners



Miltenyi Biotec



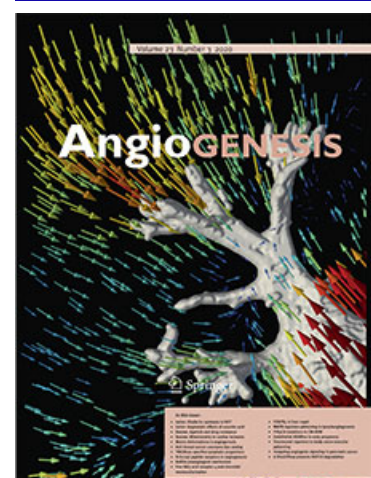
Corporate Members



L I P E D E M A
F O U N D A T I O N



Affiliated Journals



Cardiovascular
Pathology



**North American Vascular Biology
Organization**
18501 Kingshill Road | Germantown, MD
20874
(301) 760-7745

[Mailing Preferences / Unsubscribe](#)

**North American Vascular Biology
Organization**
18501 Kingshill Road | Germantown, MD
20874
(301) 760-7745
[Unsubscribe](#)

